



# New Products

## FEBRUARY 2024

EuroClone®

We are continually expanding our portfolio to meet your research needs. *Check out* the new products released this month!

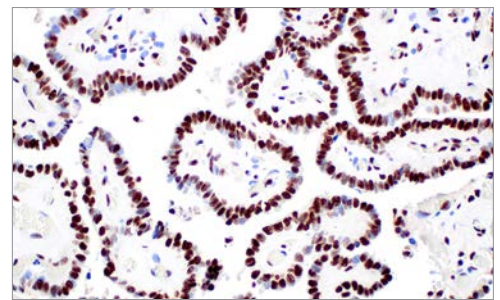
## HOT PRODUCTS

### NPM1 (E7W4P) Rabbit mAb #92825

#### Phosphoproteins important for ribosome

NPM (also known as B23, numatrin, or NO38) is an abundant phosphoprotein primarily found in nucleoli. It has been implicated in several distinct cellular functions, including assembly and transport of ribosomes, cytoplasmic/nuclear trafficking, regulation of DNA polymerase  $\alpha$  activity, centrosome duplication, and molecular chaperoning activities. The NPM gene is also known for its fusion with the anaplastic lymphoma kinase (ALK) receptor tyrosine kinase. The NPM portion contributes to transformation by providing a dimerization domain, which results in activation of the fused kinase.

**KEYWORDS:** Ribosome, DNA repair, Genome stability



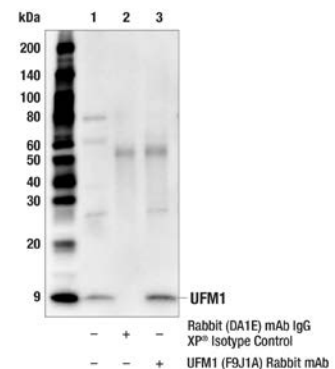
**IHC-P:** IHC analysis of paraffin-embedded human papillary thyroid carcinoma using #92825.

### UFM1 (F9J1A) Rabbit mAb #634453

#### Ubiquitin-like proteins involved in endoplasmic reticulum stress

The UFM1 conjugation system (UFMylation) is a ubiquitin-like system that plays key roles in development and stress responses. Like ubiquitin, conjugation of UFM1 is a three-step enzymatic process involving a specific E1-activating enzyme (UBA5), an E2-conjugating enzyme (UFC1), and an E3-ligation enzyme (UFL1). Modification of target protein by UFM1 has direct effects on ER homeostasis, protein translation, and response to DNA damage. Notably, independent screens identified UFMylation as a key regulator of ER-phagy and autophagy. Aberrant UFMylation is associated with many pathological conditions, including cancer, diabetes, and inflammatory diseases.

**KEYWORDS:** Ubiquitin, Endoplasmic reticulum stress



**IP:** IP of UFM1 protein from HCC1806 cell extracts. Lane 1 is 10% input, lane 2 is Rabbit (DA1E) mAb IgG XP® Isotype Control #3900, and lane 3 is #63445. WB analysis was performed using #63445. Mouse Anti-rabbit IgG (Conformation Specific) (L27A9) mAb (HRP Conjugate) #5127 was used as a secondary antibody.



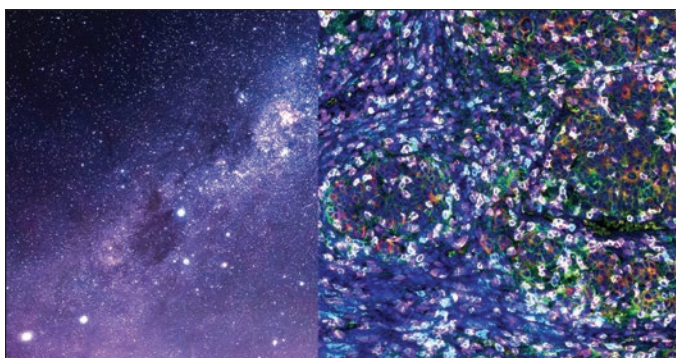
PRODUCT		APPLICATIONS	REACTIVITY
<b>Adhesion/ECM</b>			
<b>99172S</b>	NCAM1 (CD56) (E7X9M) XP® Rabbit mAb (Alexa Fluor® 555 Conjugate)	IHC-P, IF-F, IF-IC	H, M, R, Mk
<b>Apoptosis</b>			
<b>85415S</b>	Mcl-1 (D2W9E) Rabbit mAb (Pacific Blue™ Conjugate)	FC-FP	H, M, R
<b>83277SF</b>	c-Myc/N-Myc (D3N8F) Rabbit mAb (BSA and Azide Free)	WB, IF-IC, FC-FP	H, M, R, Mk
<b>Cell Cycle / Checkpoint Control</b>			
<b>54036S</b>	ALKBH1 (E6Q8I) Rabbit mAb	WB	H, Mk
<b>82504S</b>	MDM2 (F7W7X) Rabbit mAb	WB, IHC-P	H
<b>92825S</b>	NPM1 (E7W4P) Rabbit mAb	WB, IHC-P, IF-F, IF-IC	H, M, R, Mk
<b>75984S</b>	Phospho-NPM1 (Thr199) (E4C7S) Rabbit mAb	WB, IHC-P	H, M, R
<b>Chromatin Regulation / Nuclear Function</b>			
<b>49015S</b>	ALKBH5 (E3F6E) Rabbit mAb	WB, IP, IF-IC	H, M, R, Mk
<b>64994S</b>	LDB1 (E2Y9Q) Rabbit mAb	WB, IP, ChIP	H
<b>Cytoskeletal Signaling</b>			
<b>93728SF</b>	Keratin 5 (D4U8Q) Rabbit mAb (BSA and Azide Free)	WB, IF-IC, FC-FP	H
<b>84671S</b>	SPAK (F7T1K) Rabbit mAb	WB, IP, IHC-P, IF-F, IF-IC	H, M, R
<b>55727S</b>	TGOLN2/TGN38 (E7W1N) Rabbit mAb	IF-IC	H
<b>37262S</b>	Vimentin (D2IH3) XP® Rabbit mAb (iFluor® 594 Conjugate)	FC-FP	H, M, R, Hm, Mk
<b>Developmental Biology</b>			
<b>42301S</b>	BARX1 (F2K3K) Rabbit mAb	WB	H
<b>24803S</b>	BMPR2 (E9U5C) Rabbit mAb	WB, IP	H, M, R, Mk
<b>65763S</b>	ETV4 (E1W1G) Rabbit mAb	WB, IP, ChIP	H
<b>19200S</b>	ETV4 (E5Q1U) Rabbit mAb	WB, IP, IF-IC	H
<b>67509SF</b>	GATA-2 (E8B5C) Rabbit mAb (BSA and Azide Free)	WB, IHC-P, IF-IC	H
<b>35875S</b>	Phospho-GLI1 (Thr1074) Antibody	WB, IP	H
<b>92794S</b>	TCF1/TCF7 (E6O1K) Rabbit mAb (Alexa Fluor® 700 Conjugate)	FC-FP	H, M, R
<b>25670S</b>	YAP (D8H1X) XP® Rabbit mAb (Pacific Blue™ Conjugate)	FC-FP	H, M, R, Hm, Mk, (B, Hr, GP)
<b>Immunology and Inflammation</b>			
<b>41421SF</b>	CD27 (E5E7H) Rabbit mAb (BSA and Azide Free)	WB, FC-L	M
<b>95462S</b>	CD31 PECAM-1 (F8M3S) Rabbit mAb	WB, IHC-P	H, Mk
<b>87416S</b>	CRELD1 (E1B6T) Rabbit mAb	WB, IP, FC-L	H, M, R
<b>68718S</b>	G4S Linker (E7O2V) Rabbit mAb (APC Conjugate)	FC-L	All
<b>25425S</b>	G4S Linker (E7O2V) Rabbit mAb (mFluor™ Red 780 Conjugate)	FC-L	All
<b>80537S</b>	IFNAR2 (E7R3A) Rabbit mAb	WB	M
<b>28398S</b>	IRX3 (F7S2F) Rabbit mAb	WB, IP	H, (M, R, B)
<b>23183S</b>	KIR2DL2/KIR2DL3 (E7Y1V) Rabbit mAb	WB	H
<b>33401S</b>	LAMP3/CD208 (E8T2T) Rabbit mAb	IHC-P	M
<b>26745S</b>	c-Maf (E2Q5D) Rabbit mAb	WB, IP, IF-IC, FC-FP, ChIP	H
<b>33343S</b>	NLRC5 (D9Z5X) Rabbit mAb	WB	H
<b>70116S</b>	PIP4K2C (E7P3S) Rabbit mAb (Alexa Fluor® 488 Conjugate)	IF-F, FC-FP	H, M, R
<b>90092S</b>	PIP4K2C (E7P3S) Rabbit mAb (Alexa Fluor® 647 Conjugate)	IF-F, FC-FP	H, M, R
<b>55603S</b>	Phospho-Stat1 (Tyr701) (S8D6) Rabbit mAb (Alexa Fluor® 594 Conjugate)	IF-IC, FC-FP	H, M
<b>45118S</b>	Phospho-Stat1 (Tyr701) (S8D6) Rabbit mAb (iFluor® 594 Conjugate)	FC-FP	H, M



PRODUCT		APPLICATIONS	REACTIVITY
<b>Immunology and Inflammation</b> ( <i>cont.</i> )			
<b>82340S</b>	SAMHD1 (E8V1G) Rabbit mAb (Alexa Fluor® 488 Conjugate)	FC-FP	H
<b>16107S</b>	SAMHD1 (E8V1G) Rabbit mAb (Alexa Fluor® 647 Conjugate)	FC-FP	H
<b>65874S</b>	Tox2 (E3N3G) Rabbit mAb (Alexa Fluor® 488 Conjugate)	IF-IC, FC-FP	H
<b>76199S</b>	UNC93B1 (E4W2T) Rabbit mAb	WB, IP, IF-IC	H, M, R, Mk
<b>99543S</b>	UNC93B1 (E5H3O) Rabbit mAb	WB, IP, IF-IC	H, M, R, Mk
<b>47314S</b>	Whitlow/218 Linker (E3U7Q) Rabbit mAb (APC Conjugate)	FC-L	All
<b>MAP Kinase Signaling</b>			
<b>70235S</b>	Phospho-p44/42 MAPK (Erk1/2) (Thr202/Tyr204) (197G2) Rabbit mAb (mFluor™ Red 780 Conjugate)	FC-FP	H, M, R, Mk, Mi, Dm, Z, Pg
<b>76049SF</b>	Ras (E4K9L) Rabbit mAb (BSA and Azide Free)	WB, IF-F, IF-IC	H, M, R, Mk
<b>75450SF</b>	Phospho-SER1/MKK4 (Ser257) (C36C11) Rabbit mAb (BSA and Azide Free)	WB, FC-FP	H, M, R, Mk
<b>Metabolism</b>			
<b>26533S</b>	ANGPTL3 (F8N1Q) Rabbit mAb	WB	H
<b>85001S</b>	ATP5B (E8A5A) Rabbit mAb	WB	H
<b>44956S</b>	Catalase (D4P7B) XP® Rabbit mAb (Alexa Fluor® 647 Conjugate)	IF-IC	H
<b>72197S</b>	CEMIP (E4J1Z) Rabbit mAb	WB	H
<b>32041S</b>	CEMIP (E8Y4R) Rabbit mAb	WB, IF-IC	H
<b>72964S</b>	LPCAT3 (E5G9P) Rabbit mAb	WB	H
<b>15986S</b>	PRSS8 (F2Z4K) Rabbit mAb	WB	H, M, R
<b>97835S</b>	SLC25A1 (E7B2B) Rabbit mAb	WB, IP, IHC-P, IF-F, IF-IC	H, M, R
<b>24000S</b>	SOD3 (E8M3G) Rabbit mAb	WB	H, M, R
<b>Motif Antibodies</b>			
<b>25012S</b>	PTMScan® HS Pilot Pan-Methyl Lysine Tit	PTMScan	-
<b>Neuroscience</b>			
<b>35121S</b>	Ataxin-2 (E3B3Z) Rabbit mAb	WB, IP	H, M, R, Mk
<b>83935C</b>	PathScan® Nestin Sandwich ELISA Kit	ELISA	H
<b>58465C</b>	PathScan® Nestin Sandwich ELISA Kit	ELISA	M
<b>26185S</b>	p75NTR (F2L9S) Rabbit mAb	WB, IP, IF-F, IF-IC	H, M, R
<b>51358SF</b>	Parvalbumin (E8N2U) XP® Rabbit mAb (BSA and Azide Free)	WB	H, M, R
<b>Protein Folding and Trafficking</b>			
<b>35751SF</b>	RCA51 (D2B6N) XP® Rabbit mAb (BSA and Azide Free)	WB, IF-IC, FC-FP	H, M, R
<b>RTK</b>			
<b>78451T</b>	Angiogenesis Receptor Tyrosine Kinase Antibody Sampler Kit	-	-
<b>83197SF</b>	Basic FGF (E5Y6M) Rabbit mAb (BSA and Azide Free)	WB, IHC-P, IF-IC	H, M
<b>48437SF</b>	Phospho-FLT3 (Tyr589/591) (E4D6Y) Rabbit mAb (BSA and Azide Free)	WB, IF-IC, FC-FP	H
<b>Translational Control</b>			
<b>89056S</b>	STAUI (E5Z1N) Rabbit mAb	WB	H, Mk
<b>30163SF</b>	XBP-1s (E7M5C) Mouse mAb (BSA and Azide Free)	WB, IF-IC, FC-FP	H
<b>Ubiquitin and Ubiquitin-like proteins</b>			
<b>99253T</b>	PROTAC E3 Ligase Profiling Antibody Sampler Kit	-	-
<b>63445S</b>	UFM1 (F9J1A) Rabbit mAb	WB, IP	H, M, R
<b>Related Products</b>			
<b>53413S</b>	CasMINI (8H6-A8) Mouse mAb	WB	All
<b>29608S</b>	Human IGF-I Recombinant Protein	-	-
<b>87582SF</b>	Mouse (G3A1) mAb IgG1 Isotype Control (BSA and Azide Free)	IF-F, IF-IC, FC-FP, FC-L	-
<b>40004S</b>	Mouse IL-4 Recombinant Protein	-	-
<b>97747S</b>	PspCas13b (Prevotella sp. P5-125) (12F2-A10) Mouse mAb	WB	All



# What's New at CST



## SignalStar™ Multiplex IHC for Spatial Biology

**Unlocking Spatial Insights:** Accelerate Discoveries up to 70% Faster with SignalStar™ Multiplex IHC

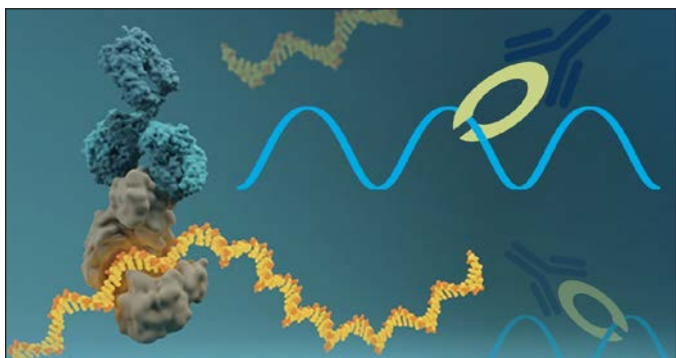
[cst-science.com/Q1-2024-info1](https://cst-science.com/Q1-2024-info1)



## Adapt Matched Antibody Pairs to Your Immunoassay Platforms

**Explore the entire CST catalog** to find Matched Antibody Pairs for your next assay. Take the guesswork out of screening for the perfect pair. CST scientists have validated antibody pairs for you, and can help you customize them to your project needs.

[cst-science.com/Q1-2024-info2](https://cst-science.com/Q1-2024-info2)



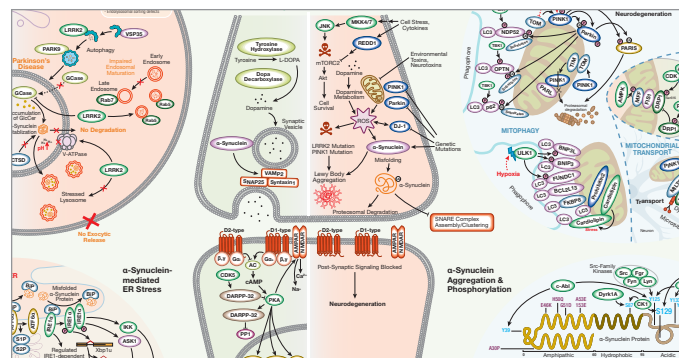
## Validated Antibodies for eCLIP

**Save time and be confident that your eCLIP antibodies generate high-quality results you can trust.** CST has partnered with Dr. Gene Yeo's lab at UCSD and Eclipsebio to bring you RNA-binding protein (RBP) antibodies that are rigorously tested and validated for RBP-eCLIP experiments. Explore our growing list of eCLIP-validated antibodies, with more to come!

[cst-science.com/Q1-2024-info3](https://cst-science.com/Q1-2024-info3)

**For Research Use Only. Not for Use in Diagnostic Procedures.**

© 2024 Cell Signaling Technology, Inc. CST, Cell Signaling Technology, and XP are registered trademarks of Cell Signaling Technology, Inc. All other trademarks are the property of their respective owners. Visit [cellsignal.com/trademarks](https://cellsignal.com/trademarks) for more information. 23-PRG-41729-EN



## Interactive Signaling Pathways

**Explore interactive signaling pathways.** Click a node or protein in the pathway to learn more about the target at PhosphoSitePlus®, a CST-developed database of post-translational modifications. Or visit the page for the corresponding antibody product.

[cst-science.com/Q1-2024-info4](https://cst-science.com/Q1-2024-info4)

[cellsignal.com/newproducts](https://cellsignal.com/newproducts)



**Cell Signaling**  
TECHNOLOGY®